



# Trisus<sup>®</sup> Chargemaster

Designed with the User in Mind  
for better Collaboration in your Organizations

This dynamic solution highlights opportunities to **optimize revenue**, for both hospital and professional billing, and **impact operational inefficiencies**.

.....

On top of continually changing charge and code regulations, the impact of COVID-19 to US hospitals' bottom line is creating financial challenges for healthcare leaders.

Having a correct, complete, and compliant chargemaster is the foundation of better financial and operational outcomes. Forward-thinking organizations know they need an intelligent, automated, and seamless process for chargemaster maintenance.

**More than a third of hospitals maintained negative operating margins during 2021. Estimated total industry net income loss was \$54 billion and median margin 11% below pre-pandemic levels.<sup>1</sup>**

The Craneware Group's Trisus Chargemaster solution combines the award-winning feature set of Chargemaster Toolkit with the power of Trisus, providing powerful auditing capabilities, ease of use, and workflow process to facilitate effective collaboration between clinical and financial staff. This dynamic solution highlights opportunities to optimize revenue, for both hospital and professional billing, and impact operational inefficiencies.

**This app is intuitive – a one-stop-shop where everything is in one place and the reference material is right in front of you. It's not only fast, it's smart.**  
- System Data Integrity Manager

1. <https://www.kaufmanhall.com/insights/research-report/covid-19-2021-pressure-continues-hospital-margins>

# A BETTER, MORE COMPREHENSIVE WAY TO MANAGE YOUR CHARGEMASTER

Designed with the user in mind to enhance collaboration, Trisus Chargemaster provides a wide range of features for different types of users. Each user profile provides unique CDM views and functionality needed to efficiently perform their necessary daily tasks for optimal CDM management.



## Reference

Reference users, such as coders, billers, and CDM analysts need a one-stop-shop for quick access to comprehensive regulatory reference data. Trisus Chargemaster provides clinical, coding, financial, and regulatory information to the user in-app, saving time and enhancing coding accuracy. Reference data is deeply integrated into Trisus Chargemaster and easily searchable and accessible by all users.



## Collaborate

Revenue integrity departments have many collaborative partners across the organization including clinical, patient access, and decision support team members who assist in CDM management. Building on the Reference functionality, Collaborate features a customizable workflow and change request system that match your change control processes. Change requests can be made one at a time, or in bulk requests when needed for year-end coding change, adding new services lines, or mergers and acquisitions.

The solution tracks interdepartmental routing, approvals, communications, and audit trails. The ease of use facilitates communication between the finance team and other departments, making it easier and more efficient to maintain the CDM. Collaborate users can also view the CDM to evaluate revenue and usage to implement strategies for optimal revenue contribution.



## Power

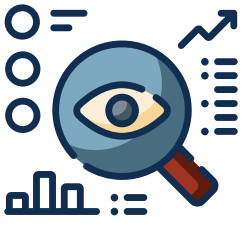
Power users have all the functionality of Reference and Collaborate, plus all the CDM management components. These users include CDM managers and analysts as well as department leaders that need access to full functionality. Trisus Chargemaster alerts the Power user to issues needing immediate resolution such as revenue opportunities and compliance issues for both hospital and professional CDM data.

Displaying a full view of the CDM, Power users can easily create and modify charge line items for all departments and see the immediate impact of every change. The Craneware Group's proprietary data drives an automated audit review of all line items, flagging potential problems before they occur. Powerful dashboards demonstrate the health of your CDM and show trends to ensure issues are quickly and efficiently corrected. Easy-to-use filters and tabular view offer Power users fast analysis and management to achieve issue detection and correction.



## Wisdom

Wisdom highlights issues for the user to make data-driven, informed decisions. This level of functionality provides best practice guidelines and recommendations for building new codes into the CDM. Pricing analysis allows for modeling the impact of price changes and compare your pricing strategy with applicable hospitals.



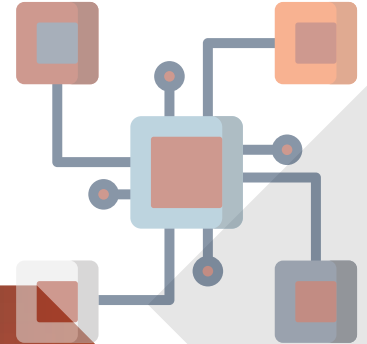
## Data Visibility

As more hospitals move to an enterprise data structure, revenue teams are often missing a comprehensive view of charge data. Trisus Chargemaster can be configured to fit your organization's needs when it comes to data visibility.

Discovery View provides a single, clear, concise view of all CDM data with the ability to view and filter by location/service line, volume, cost center, revenue and usage, and fee schedules for multiple facilities, payors, and service lines.

Corporate View standardizes and maintains files across disparate billing systems to ensure consistent, accurate pricing and coding.

Our passionate professionals consult with your team to ensure configuration of Trisus Chargemaster to meet your organization's data needs. The flexibility of Trisus Chargemaster allows comprehensive CDM management in a variety of scenarios, from one single PAS to multiple systems across both small and large healthcare organizations.



## Trisus Integration

### Integration with Patient Accounting and Electronic Health Record Systems

CDM data residing in other systems can be at risk when that data must be manually transferred to your patient financial information system. Trisus Integration ensures quick, secure, and error-free transfer of your CDM changes and edits to your financial system. Integration gives you the flexibility to control updates according to your hospital's preference. You can send all changes, selected section from a specific department, or one specific set of price or code changes.

As an intuitive and flexible app, Trisus Integration replaces a tedious, unnecessary chore with a seamless process preventing mistakes and promoting compliance. Trisus Integration keeps your CDM and patient financial system in sync on a daily basis to help improve data quality and integrity.

The Craneware Group has experience successfully integrating with a variety of patient financial systems including Epic, Cerner INVISION, Cerner Millennium, MedHost, McKesson HealthQuest, McKesson STAR, MEDITECH MAGIC, MEDITECH Client/Server, MEDITECH Expanse and many others. Our implementation team works with a consultative approach to determine the most efficient and effective integration model for your organization.



# Trisus Reference

## The most **current, accurate, and relevant** regulatory data in the industry

Trisus Reference provides all users an in-app, one-stop shop for comprehensive clinical, financial, and regulatory coding reference data and resources with no need for printed reference books or exhaustive internet searches for information.

Pulling together all research resources and information, Trisus Reference provides fast and easy identification of CPT, HCPCS, ICD-9, ICD-10, revenue code, modifier information, NDC, fee schedules, CCI edits and more. The tabular layout and search capabilities deliver quick access to the information you need, without leaving the Trisus Chargemaster application.

The Craneware Group's dedicated team of data analysts ensures the solution is always delivering the most up-to-date regulatory, coding, and compliance data directly to the application. The data team continuously updates Trisus Reference with the most recent coding changes as they occur, removing the wait for software updates.



With subscriptions to Craneware Insights, impactful regulatory updates and changes are emailed to you with topline summaries and actionable advice so you can take action as necessary.

Trisus Reference is included as part of the Trisus Chargemaster solution and available for all users.

The Craneware Group (AIM: CRW.L) is the leader in automated value cycle solutions, collaborating with U.S. healthcare providers to plan, execute and monitor operational, financial and clinical performance so these leading organizations continue to drive better outcomes for the communities they serve. The Craneware Group's Trisus platform is an efficiency multiplier - automating quality audits, identifying waste, and streamlining administrative workflows. Our value cycle management suite includes charge capture, strategic pricing, 340B management, claims analytics, patient engagement, revenue recovery and retention, and cost and margin intelligence solutions. Learn more at [thecranewaregroup.com](https://www.thecranewaregroup.com).



info@thecranewaregroup.com  
thecranewaregroup.com  
1-877-624-2792

Reprint no. 2022-FS\_Trismus-Chargemaster 20220724